

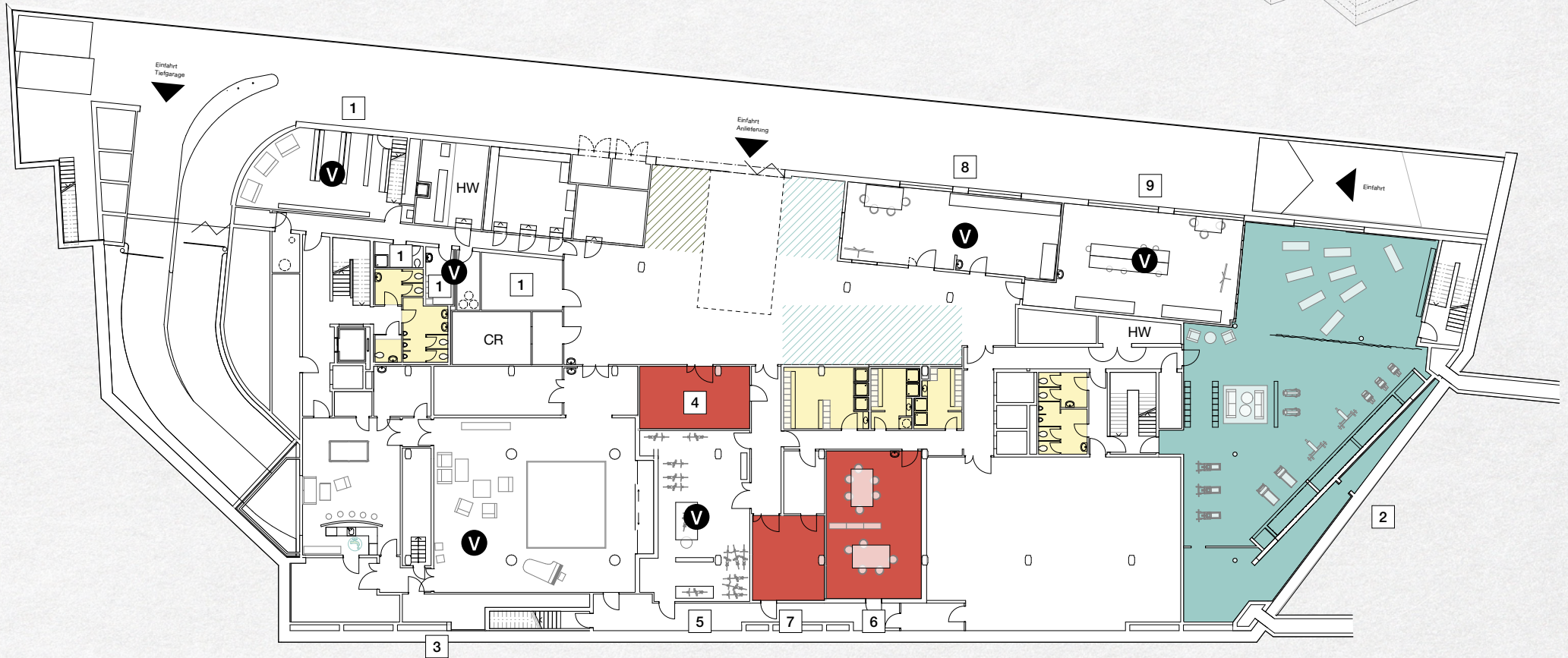
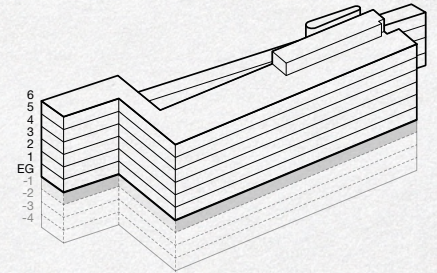
UG

-1

Mietflächen

- |                                |                               |
|--------------------------------|-------------------------------|
| 1 1UG.1.1 / 98 m <sup>2</sup>  | 6 1UG.9.3 / 68 m <sup>2</sup> |
| 2 1UG.7.3 / 339 m <sup>2</sup> | 7 1UG.9.4 / 30 m <sup>2</sup> |
| 3 1UG.8.1 / 417 m <sup>2</sup> | 8 1UG.7.1 / 81 m <sup>2</sup> |
| 4 1UG.9.1 / 33 m <sup>2</sup>  | 9 1UG.7.2 / 96 m <sup>2</sup> |
| 5 1UG.9.2 / 81 m <sup>2</sup>  |                               |

**KOWERK**  
DIETLIKON



Ausstellung / Gewerbe    Lagerfläche    WC-Anlagen / Dusche / Garderobe    vermietet

4 m    8 m    12 m    16 m    20 m

